

# MAS STUDENT ORIENTATION

MIAMI ARTS STUDIO 6-12 @ ZELDA GLAZER  
2021-2022

Dr. Miguel Balsera, Principal

Annie Diaz, Assistant Principal

Patricia Fleri, Assistant Principal





# FIRST DAY OF SCHOOL REMINDERS

- Arrive early!! Traffic is heavy!!!!
- Know your schedule located on the portal.
- Report to pre-designated areas.
- Wear mandatory school uniform including **UNIFORM POLO WITH MAS LOGO.**
- Report to 1<sup>st</sup> period at 7:20 am.
- First day of school will be an 8-period day.
- Your lunch schedule will be determined by your 5<sup>th</sup> period class.



# ARRIVAL PROCEDURES – 6:45 AM – 7:25 AM

There are two locations for morning drop-off:

## Bus loop

located on 24 Street and 150 Court

## Parent loop

located on 152 Ave – north of 26 Street



WHEN DROPPING OFF  
STUDENTS,  
PARENTS MUST REMAIN  
IN THE CAR



# DROP OFF PROCEDURES

If you arrive to school prior to 7:15 AM, you must report to the following areas:

12 <sup>th</sup> grade	In front of PAC
11 <sup>th</sup> grade	Building 5, blue tables
10 <sup>th</sup> grade	Behind building 2, orange tables
9 <sup>th</sup> grade	Building 2 center, Rotunda area
8 <sup>th</sup> grade	PE Field
7 <sup>th</sup> grade	PE Field
6 <sup>th</sup> grade	Cafeteria



# TRANSPORTATION

## **Public transportation**

**is extremely limited this year.**

- Transportation cannot be requested for the first 10 days of school upon our return.
- After 10 days, you may request transportation.
- Space-available only.
- Masks are required on public school busses.
- Contact Adriana Rodriguez at 305-485-2323 ext. 2105 if you have questions.



# Uniform Policy

## MIDDLE SCHOOL

- Khaki uniform pants – no joggers, no jeggings, no leggings
- **Black polo WITH MAS LOGO**
- Closed shoes/no high-heeled shoes
- MAS sweatshirt with MAS related logo/or all black sweatshirt

## HIGH SCHOOL

- Khaki uniform pants or shorts – no joggers, no jeggings, no leggings
- **Black/white polo WITH MAS LOGO**
- Closed shoes/no-high heeled shoes
- MAS sweatshirt with MAS related logo/or all black sweatshirt/or University related sweatshirt – Seniors only





# Uniform Policy

## Tops (Polos) – Must have school logo



Black

Middle and High School



White

High School Only

## Outerwear – MAS Jackets



Black sweatshirt



MAS jackets



University sweaters  
Seniors Only

## Bottoms: Khaki Only (must be worn at the waist)



Long Pants  
Middle and High School

Shorts  
High School Only



## On Spirit Days and Fridays:

- MAS Friday T-Shirts
- MAS Club / Athletic T-Shirts
- Announced School approved bottoms

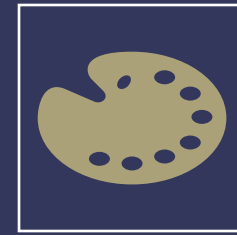
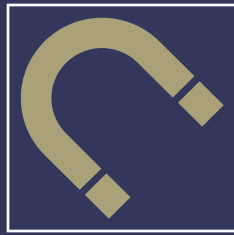
## Shoes

No sandals, Flip flops, Crocs, open toes, or heels.





# FACE MASK GUIDELINES



Masks are highly encouraged.

\*subject to change based on School Board Policy

MAS masks representing Magnet strands are allowed.

Masks may not display any written messages or symbols.

Solid colors are preferred.



# KNOW YOUR SCHEDULE

STUDENT SCHEDULES ARE  
LOCATED ON THE STUDENT  
PORTAL



YOU MAY ACCESS YOUR  
SCHEDULE VIA YOUR PHONE  
OR YOU MAY PRINT A RECENT  
COPY



# SCHOOL HOURS



ARRIVAL

6:45 AM - 7:25 AM



SCHOOL HOURS

7:30 AM - 2:30 PM



DISMISSAL

2:30 PM - 3:00 PM



AFTER CARE  
students only)

2:30 PM - 6:00 PM (Middle School



# FIRST DAY OF SCHOOL SCHEDULE

First Bell	7:25 a.m.
Period 1	7:30 a.m. – 8:30 a.m.
Period 2	8:35 a.m. – 9:10 a.m.
Period 3	9:15 a.m. – 9:50 a.m.
Period 4	9:55 a.m. – 10:30 a.m.
Period 5 & lunch	10:30 a.m. – 12:30 p.m.
Period 6	12:35 p.m. – 1:10 p.m.
Period 7	1:15 p.m. – 1:50 p.m.
Period 8	1:55 p.m. – 2:30 p.m.



# DAILY SCHEDULE

Homeroom	7:30 am – 7:35 am
Block 1	7:35 am – 9:05 am
Block 2	9:10 am – 10:40 am
Block 3 and Lunch	10:40 am – 12:55 pm
Block 4	1:00 pm – 2:30 pm

A day schedule:      Periods 1,3,5,7

B day schedule:      Periods 2,4,6,8



# LUNCH SCHEDULES

1<sup>ST</sup> LUNCH      10:40 AM – 11:10 AM

2<sup>ND</sup> LUNCH      11:15 AM – 11:45 AM

3<sup>RD</sup> LUNCH      11:50 AM – 12:20 PM

4<sup>TH</sup> LUNCH      12:25 PM – 12:55 PM

Students are assigned to three designated areas depending on your teacher:

Inside Cafeteria

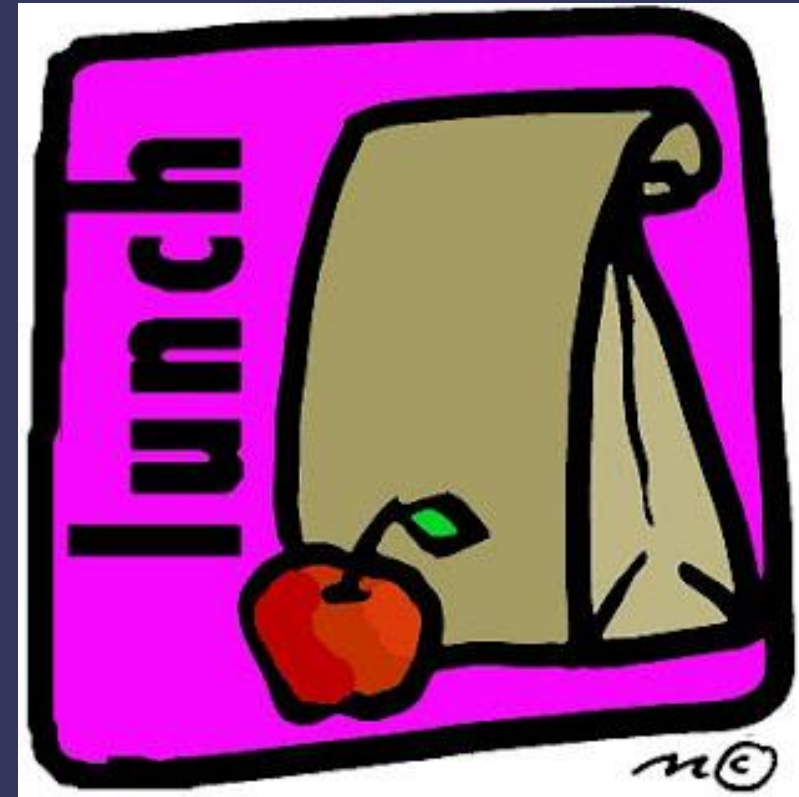
Blue tables/deck

Orange tables



# LUNCH INFORMATION

- All Miami Dade County Public School students will receive free breakfast and free lunch for the 2021-22 school year.
- Free/Reduced Price Meal Applications are still available for any other benefits that may apply. Visit the [Department of Food & Nutrition website](#) for more information.



# STANDARD SAFETY PROTOCOLS

CONDUCT DAILY  
HEALTH SCREENINGS  
TO CHECK FOR  
SYMPTOMS

MASKS ARE HIGHLY  
ENCOURAGED  
  
\*subject to change  
based on School Board  
Policy

CONTINUE TO WASH  
YOUR HANDS  
FREQUENTLY

FOLLOW THE UPDATED  
SIGNAGE LOCATED  
THROUGHOUT THE  
SCHOOL AND  
STAIRWAYS

STUDENTS MUST SIT IN  
DESIGNATED AREAS  
FOR LUNCH

CONTINUE TO USE  
HAND SANITIZER  
FREQUENTLY





# DISMISSAL PROCEDURES

Parents should  
use the parent  
loop for  
afternoon pick  
up.

Students will be released through a staggered dismissal in order to avoid crowding.

<b>First floor</b>	<b>2:22 pm</b>
--------------------	----------------

<b>Second floor</b>	<b>2:26 pm</b>
---------------------	----------------

<b>Third floor</b>	<b>2:30 pm</b>
--------------------	----------------

Students must go directly to their vehicle and exit the premises.

Parents may not use the Bus loop for afternoon pick up.



## PICK-UP LOCATIONS

In the afternoon, parents may pick up students using the



PARENT LOOP ONLY



Private transportation and yellow busses will use the BUS LOOP.



# AFTER CARE



AFTER CARE  
SERVICES ARE  
AVAILABLE FOR 6<sup>th</sup>,  
7<sup>th</sup>, and 8<sup>th</sup>  
GRADE  
STUDENTS ONLY.



Visit  
[mas.dadeschools.net](https://mas.dadeschools.net)  
for updated  
information and  
registration procedures



We do not offer  
BEFORE  
SCHOOL  
SERVICES.

AFTER CARE  
runs from 2:30  
pm – 6:00 pm.



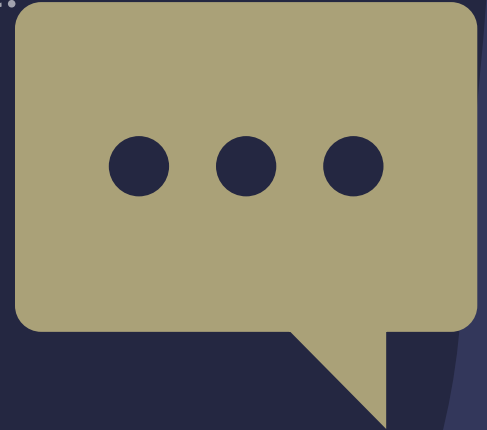
If you have any  
questions  
regarding AFTER  
CARE, please call  
305-485-2323.



# STAY CONNECTED THROUGH REMIND

- Students should stay connected through REMIND.
- If you are already on Remind there is no need to retext.
- REMIND is for students only.
- New 6<sup>th</sup> and 9<sup>th</sup> graders should text the following message to 81010:

- 6<sup>th</sup> grade: 2028-1
- 9<sup>th</sup> grade: 2025-1





# BYOD!!!!

## BRING YOUR OWN DEVICE

- At this time, laptops are not required, however; we encourage you to Bring Your own Device if you have one.
- If you are in need of a device, information on the Distribution of Devices will be shared **during the first week of school.**
- Make sure to check your emails for Distribution of Devices information.



# MEET US AT MAS

The school will be open to **new students and their parents only** on:

**Saturday, August 21, 2021**

**9:00 am - 11:00 am**

- Students and parents may walk around campus but cannot go inside any classroom.
- Student ambassadors will be available to assist.
- Scheduling concerns will not be addressed on Saturday rather during the first few weeks of school through the school counselors.
- PE Uniforms will be on sale for pre-orders during the first three weeks of school. More information will be given through PE classes.

